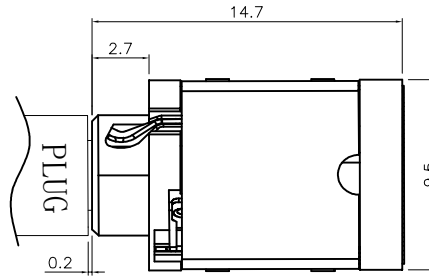
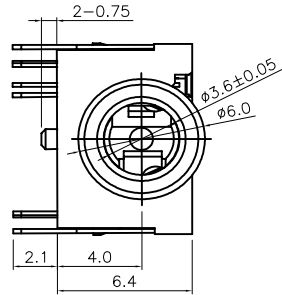
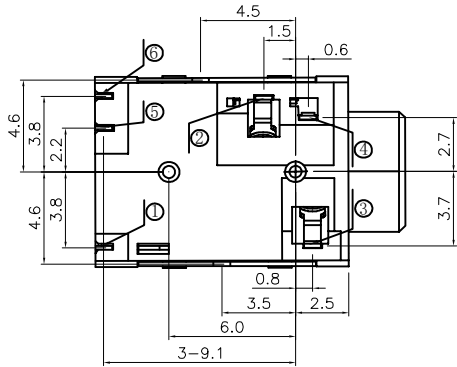
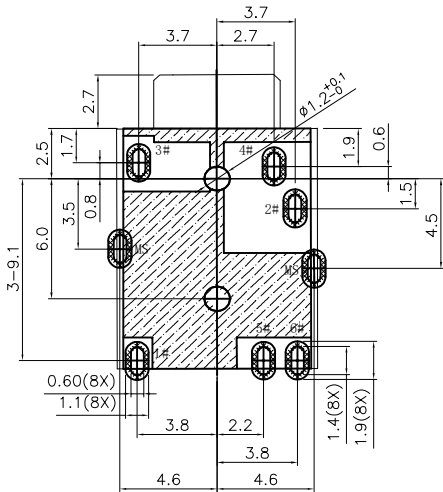


RoHS GP HF

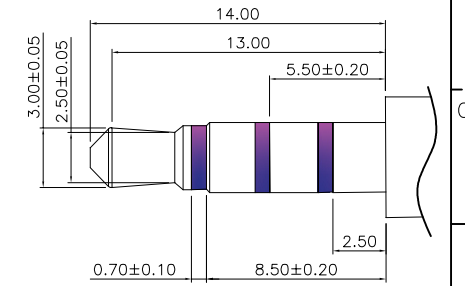
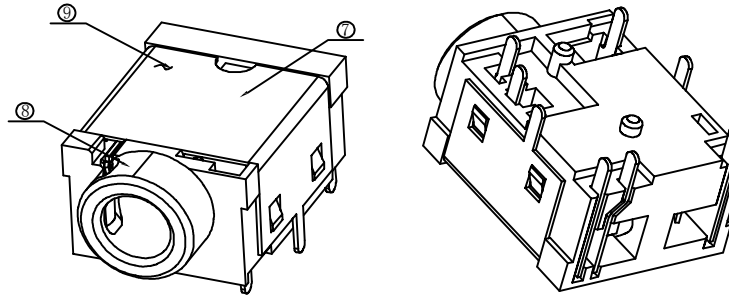
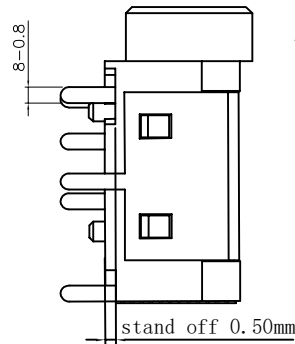
REV.	ECR/N NO.	DESCRIPTION	DRAWN	DATE
A	/	NEW	HAIXIANG	2015/04/18
B	/	更换图框	DENGJU	2020/12/15



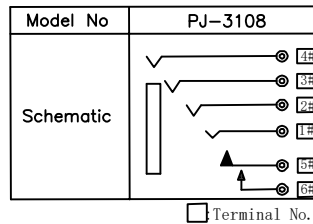
NOTE:
 Rating: DC 30V 0.5A
 Insulation Resistance: 100MΩ Min.
 Contact Resistance: 30 mΩ Max.
 Dielectric Withstanding Voltage: 500V/AC 1Minute.
 Insertion and Extraction Force: 3-30N.
 Life Test: 5000cycles.



PCB LAYOUT(TOP VIEW)
TOL:±0.05



RECOMMENDED PLUG
4-POLE



NO.	PART NAME	Q'TY	MATERIAL	FINISH	REMARK
	Mylar	1	T=0.08		YELLOW
⑨	SEPERATE	1	HIGH TEMP THERMOPLASTIC UL-94V-0		BLACK
⑧	HOUSING	1	HIGH TEMP THERMOPLASTIC UL-94V-0		BLACK
⑦	SHELL	1	SPCC t=0.20		Ni-PLATED
⑤	5# TERMINAL	1	C 5191 t=0.20		Matte Tin/Ni-Plated
⑥	6# TERMINAL	1	C 5191 t=0.20		Au Plated on Contact Area, Tin Plated on Solder Tails, Nickel Underplating Over All.
④	4# TERMINAL	1	C 5191 t=0.20		
③	3# TERMINAL	1	C 5191 t=0.20		
②	2# TERMINAL	1	C 5191 t=0.20		
①	1# TERMINAL	1	C 5191 t=0.20		

TOLERANCE	MODEL NAME: $\phi 3.5$ mm耳机座 CK-3.5-108-1黑色 塑胶PA9T			DRAWN: DENGJU	
X.X ±0.35	MODEL NO: WLPN-087A			CHECKED: YAOSHIXUAN	
X.XX ±0.25	UNIT:	SCALE:	REVISION:	SHEET	APPROVED: WUHAUMING
X.XXX ±0.10	mm	1:1	B	1/1	DATE: 2020/12/15
ANGLE ±2.0°	DWG NO:			FILE: C	
	WILCO 深圳市兴万联电子有限公司			SHENZHEN XING WAN LIAN ELECTRONICS CO., LTD.	