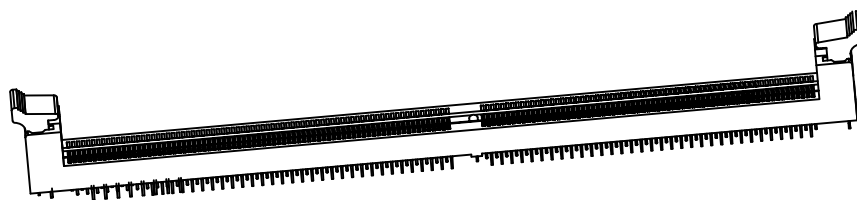
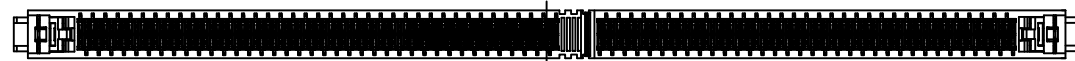
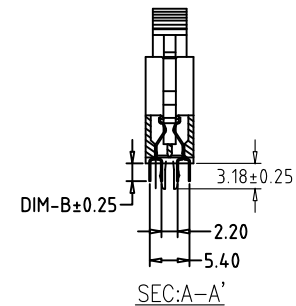
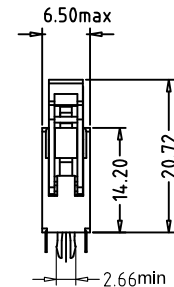
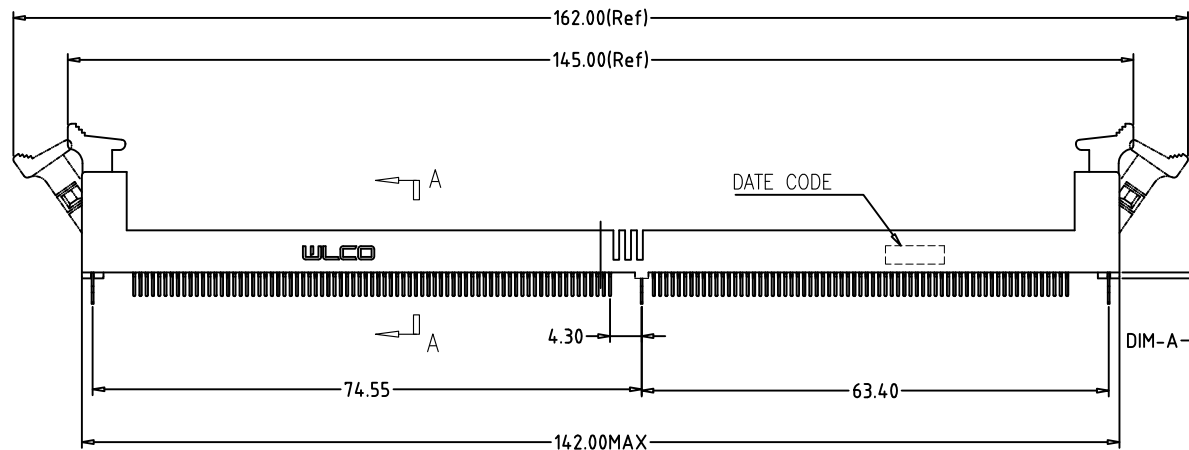
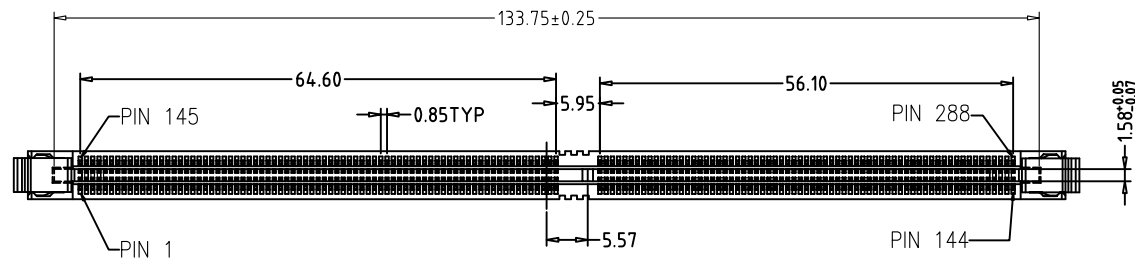


RoHS HF C环保

Mark	ECN NO.	DESCRIPTION	DESIGN	Date:
A	—	New	—	—

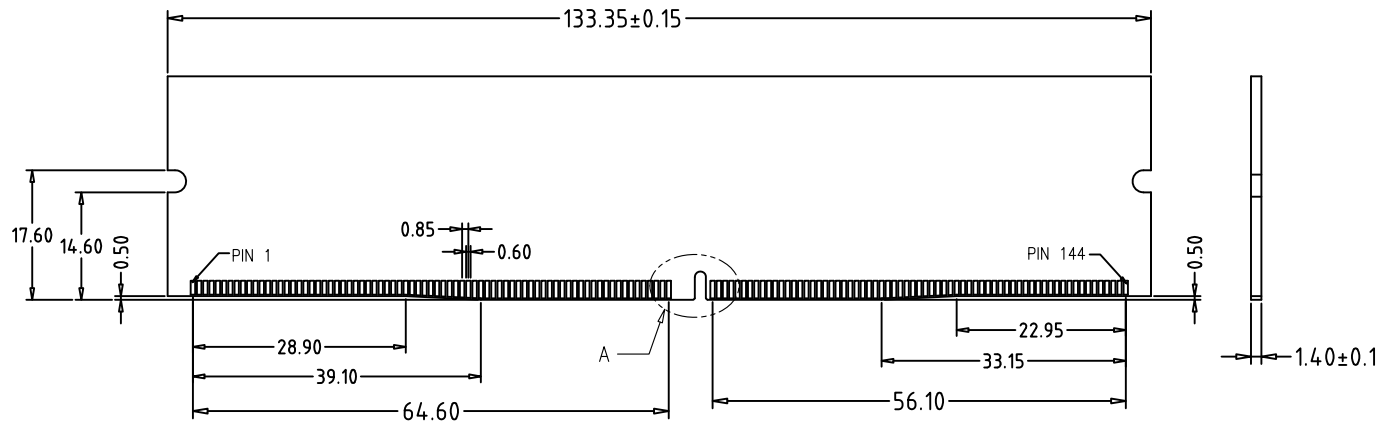


Tolerance X.X ±0.30 X.XX ±0.25 X.XXX ±0.15 Angle ±2.0°	Model Name: DDR4 288Pin PA66黑色 双侧扣 鱼叉式2.66 端子半金镀G.F			Drawing: 黄海祥
	Model No: WLDD-002A			Checked: 姚世宜
	UNIT:	SCALE:	REVISION:	SHEET
	mm	Full	A	1/2
WLCO 深圳市兴万联电子有限公司 SHENZHEN XINGWANLIAN TECHNOLOGY CO, LTD			DWG NO.	
			FILE:	C

Approved: 李建
Date: 2018.06.28

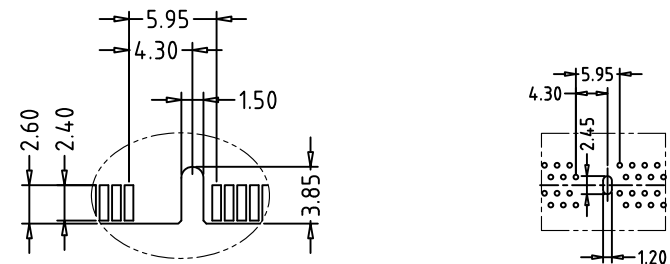
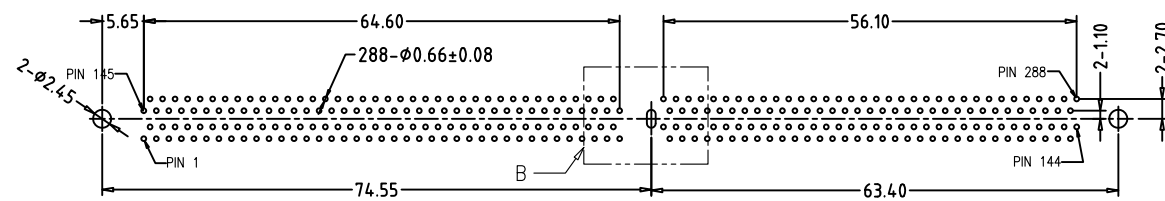
RoHS HF C环保

Mark	ECN NO.	DESCRIPTION	DESIGN	Date:
A	—	New	—	—



- Materials.
 - Housing: Thermoplastic UL94V-2
 - Contact: Copper alloy or Phosphor Bronze or High conductivity copper alloy
 - Latch: Thermoplastic (PA66 or PA6T)
 - Metal clip: Copper alloy
- Finish
 - Contact area: 1u"~30u" Gold plating
 - Solder area: 100u"(min) Matte Tin <Lead free> plating
 - Under plating: 50u"(min) Nickel plating
- Specification
 - Current Rating: 1.0Amp/contact(max)
 - Voltage Rating: 250V
 - Dielectric Withstanding Voltage: 500V AC for 1 minute
 - Contact Resistance: 10m ohms max
 - Insulation Resistance: 1000M ohms min
 - Contact Retention Force: 300g min
 - Insertion Force: 12.9lbs max
 - Withdrawal Force: 2.02gf per pin pair min
 - Durability Rating: 25 cycles min
 - Operating Temperature: -55°C to +85°C

- RoHS Compliant
 - This Component And Its Homogeneous Subcomponents Are RoHS Compliant.



Tolerance X.X ±0.30 X.XX ±0.25 X.XXX ±0.15 Angle ±2.0°	Model Name: DDR4 288Pin PA66黑色 双槽扣 鱼叉式2.66 端子半金制G.F				Drawing: 黄海祥	
	Model No: WLDD-002A				Checked: 姚胜宜	
	UNIT:	SCALE:	REVISION:	SHEET	Approved: 李建	
	mm	Full	A	2/2	Date: 2018.06.28	
WLCO 深圳市兴万联电子有限公司 SHENZHEN XINGWANLIAN TECHNOLOGY CO, LTD		DWG NO.				
		FILE: C				